

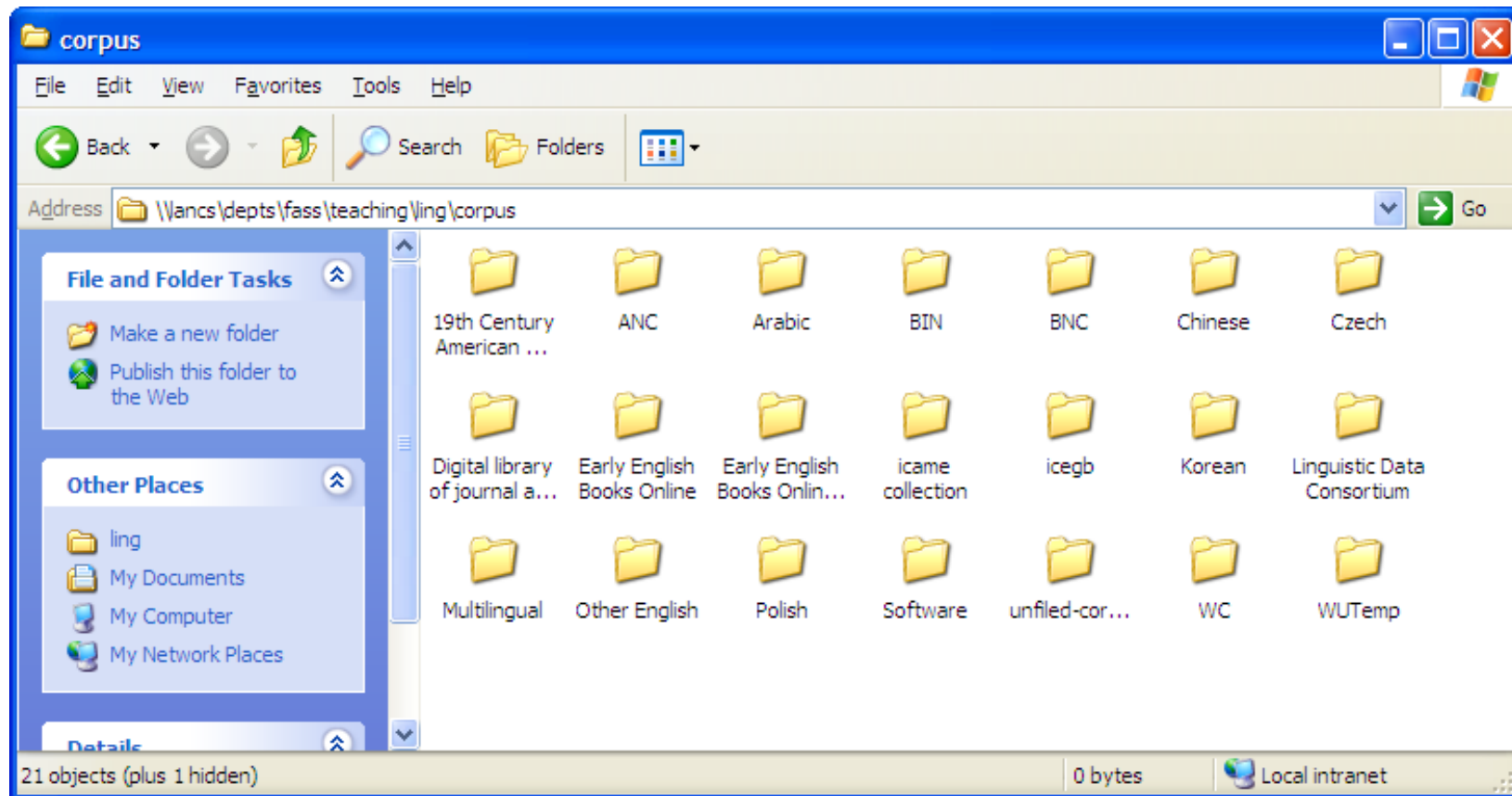
Available corpus resources at Lancaster

Andrew Hardie, Paul Rayson et al

6th October 2008

Corpus resources

- \\lancs\depts\fass\teaching\ling\corpus
- Mapped as network drive in Ling labs

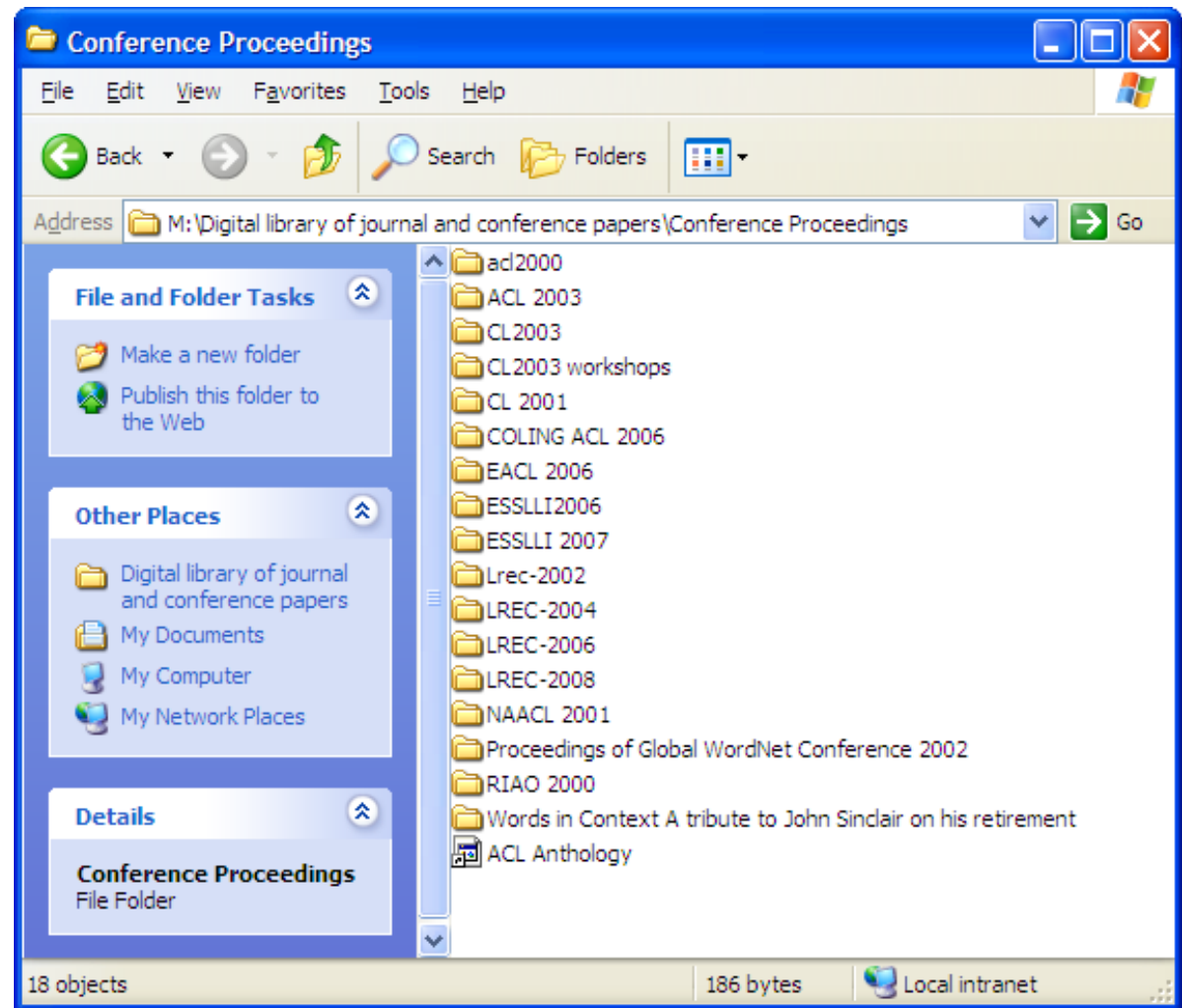


Corpus resources (2)

- Linguistic Data Consortium
- <http://www ldc.upenn.edu/>
- Membership years: 2003, 2004, 2007, 2008
- ICAME collection (2nd edition)
 - <http://icame.uib.no/cd/>
- Archer corpus (contact Sebastian Hoffmann)
- DCPSE – diachronic corpus of present day spoken English

Digital library

- Conference proceedings
- Corpora
Journal



University Centre for Computer Corpus Research on Language

- <http://ucrel.lancs.ac.uk/>
 - Members
 - Projects
 - Bookshelf
 - Publications list
 - Corpora
- Mailing list
 - <http://mail.comp.lancs.ac.uk/mailman/listinfo/ucrel>



Software

- <http://ucrel.lancs.ac.uk/tools.html>
- BNCweb
- CQPweb
- BNC Web Index
- LL calculator
- Wmatrix
- CLAWS
- USAS semantic tagger
- Netapps
 - AntConc
 - ICECUP
 - WordSmith

Unix/Linux Servers

- `juilland.comp.lancs.ac.uk`
 - Currently hosts Wmatrix
- `corpora.lancs.ac.uk`
 - Hosts `bncweb.lancs.ac.uk` and `cqpweb.lancs.ac.uk`
- Perl
- MySQL
- Contact Sebastian, Andrew or Paul for an account